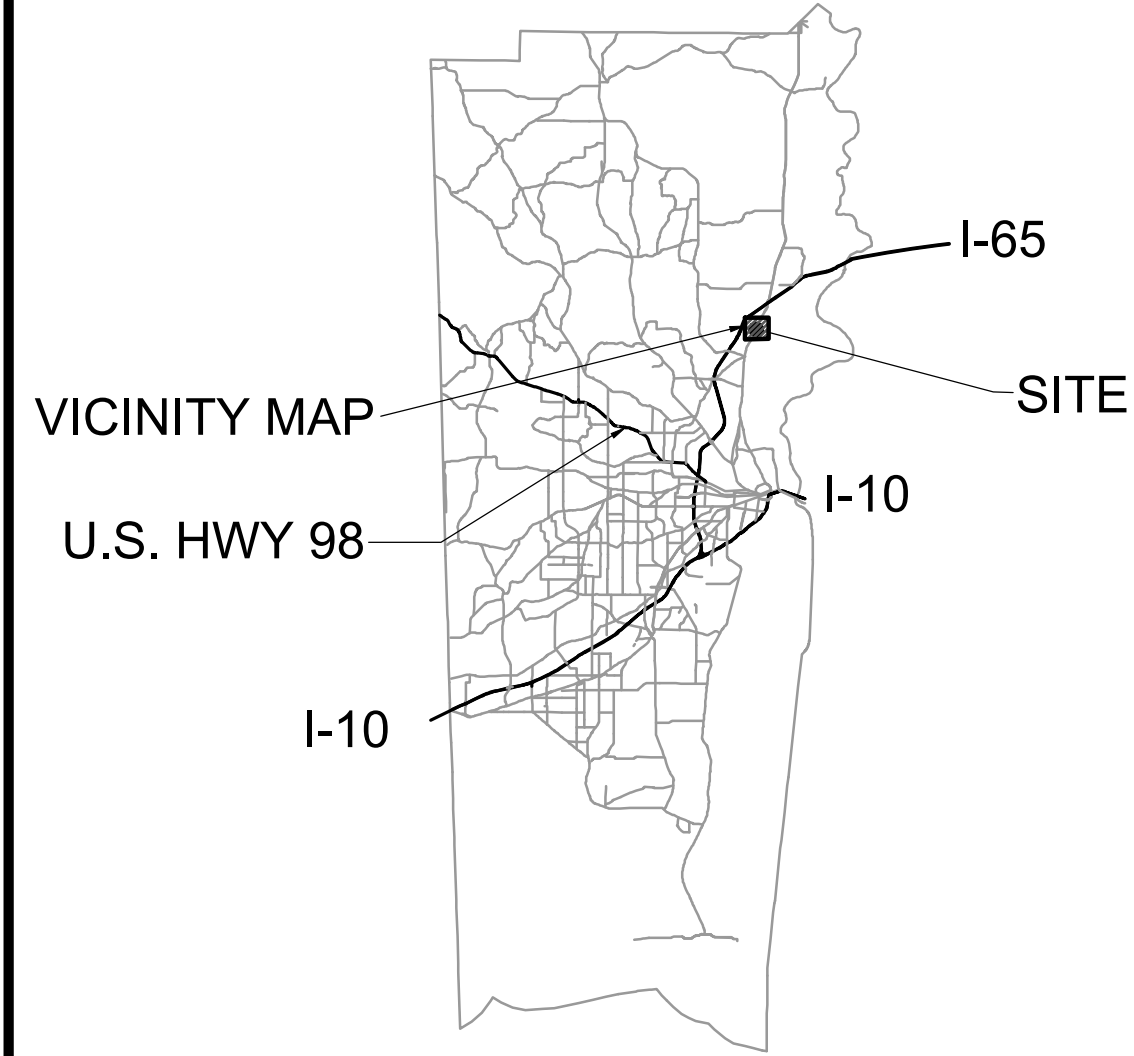


SATSUMA STREET RESURFACING

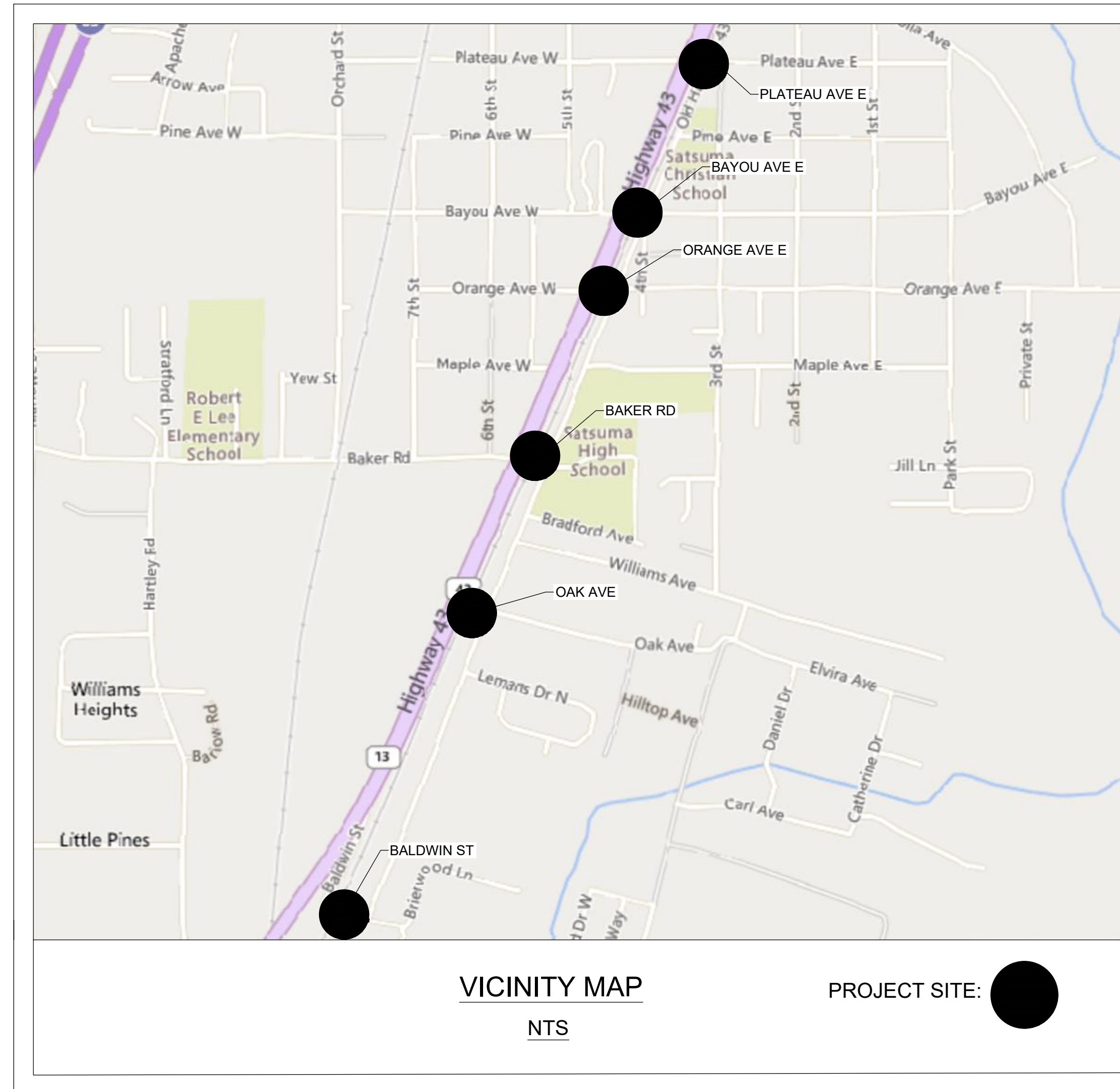
BALDWIN ST, OAK AVE, BAKER RD, ORANGE AVE E, BAYOU AVE E, PLATEAU AVE E

CITY OF SATSUMA, AL



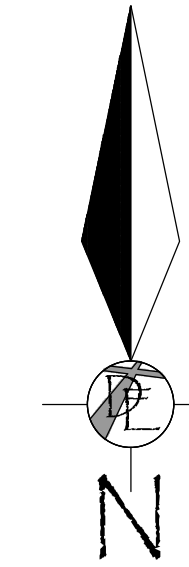
MOBILE COUNTY, AL
N.T.S.

Sheet List Table	
Sheet Number	Sheet Title
C01	COVER SHEET
C02	NOTES AND LEGEND
C03	TYPICAL SECTIONS & DETAILS
C04	QUANTITIES SUMMARY
C05	GEOMETRIC PLAN - BALDWIN ST
C06	GEOMETRIC PLAN - OAK AVE
C07	GEOMETRIC PLAN - BAKER RD
C08	GEOMETRIC PLAN - ORANGE AVE
C09	GEOMETRIC PLAN - BAYOU AVE
C10	GEOMETRIC PLAN - PLATEAU AVE
C11	TRAFFIC CONTROL PLAN
C12	TRAFFIC CONTROL DETAILS



VICINITY MAP
N.T.S.

PROJECT SITE: ●



811
Know what's below.
Call before you dig.

Dig Safely. Alabama Call

UNDERGROUND UTILITY NOTE

UNDERGROUND UTILITY LOCATIONS SHOWN ARE APPROXIMATE AND ARE BASED ON INFORMATION PROVIDED. THE UTILITIES SHOWN MAY NOT BE A COMPLETE REPRESENTATION OF ALL UTILITY LINES IN THE PROJECT AREA. CONTRACTOR IS REQUIRED TO CONTACT ALABAMA ONE CALL PRIOR TO DIGGING (1-800-292-8525) (WWW.AL1CALL.COM). OTHER UTILITIES (INCLUDING PRIVATE UTILITIES OUTSIDE A PUBLIC RIGHT-OF-WAY) THAT DO NOT PARTICIPATE IN THE ALABAMA ONE CALL LINE LOCATION SERVICE NEED TO BE CONTACTED INDIVIDUALLY AND/OR PHYSICALLY LOCATED BY THE CONTRACTOR.

CITY OF SATSUMA CITY COUNCIL
MAYOR MARK BARLOW
RANDY LITTLE
MIKE BUTLER
JASON SKELTON
ALLISON REESE
BUBBA PHILLIPS

ALABAMA DEPARTMENT OF TRANSPORTATION SPECIAL AND STANDARD HIGHWAY DRAWING REFERENCES, 2023 EDITION:		
INDEX	DWG. NO.	DESCRIPTION
74004	LCS-107	DETAILS SHOWING REQUIREMENTS FOR LIGHTING CONSTRUCTION SIGNS
74007	TCD-100	DETAILS FOR TRAFFIC CHANNELIZATION DEVICES
70301	TCM-703	PAVEMENT LEGENDS AND MARKINGS DETAILS
70302	TCM-703	PAVEMENT LEGENDS AND MARKINGS DETAILS
71092	SHS-28	STANDARD HIGHWAY SIGNS
71093	SHS-29	STANDARD HIGHWAY SIGNS
70126	IPS-701-8	STANDARD HIGHWAY SIGNS
73501	RRX-107-1	RAILROAD CROSSING PASSIVE WARNING SIGNS AND PAVEMENT MARKINGS
73504	RRX-107-2	RAILROAD CROSSING ACTIVE WARNING - SIGNS AND PAVEMENT MARKINGS
73507	RRX-107-3	DIMENSIONS FOR RAILROAD CROSSING SIGNS, SIGNALS, AND MARKINGS

LENGTH OF PROJECT SUMMARY:		
ROADWAY	LENGTH	DESIGN SPEED
BALDWIN ST	424 FT	25 MPH
OAK AVE	158 FT	25 MPH
BAKER RD	126 FT	25 MPH
ORANGE AVE E	84 FT	25 MPH
BAYOU AVE E	65 FT	25 MPH
PLATEAU AVE E	59 FT	25 MPH

UTILITY OWNERS		
TELEPHONE AT&T Mike Smith 2155 Old Shell Rd. Satsuma, AL 36607 Business: (251) 471-8442 Fax: (251) 471-8267 Cell: (251) 591-6630 ms5547@att.com	WATER & SEWER Satsuma Water & Sewer 5502 Old Hwy 43 Satsuma, AL 36572 Steve Williams Cell: (251) 747-2611 Business: (251) 675-1257 swilliams@satsumawater.com	POWER Alabama Power Company Luis McMurphy Special Project Engineer 150 St. Joseph St. PO Box 2247 Mobile, AL 36602 Business: (251) 694-2008 Cell: (334) 403-0321 lmcumrph@southernco.com
FIBER Unity Fiber Brandon Whigham 107 St. Francis St. Ste 1500 Mobile, AL 36602 Business: 877-652-2321 Cell: 251-709-7749 brandon.whigham@unity.com	GAS Spire Mr. Joshua Lessley 2828 Daughlin St. Mobile, AL 36606 Office: (251) 450-4635 Fax: (251) 450-4758 Cell: (251) 234-4240 Joshua.Lessley@spireenergy.com	RAILROAD Norfolk Southern Jacob Watson Engineer Public Improvement Cell: (404) 859-9597 Jacob.Watson@nscorp.com

SUBMITTED BY: Avalisha L. Fisher
 AVALISHA L. FISHER, P.E., ALABAMA REG. NO. 22182

DATE: 02/08/2024

ADMINISTRATIVE APPROVAL BY: Mark Barlow
 Mark Barlow (Feb 15, 2024 16:01 CST)

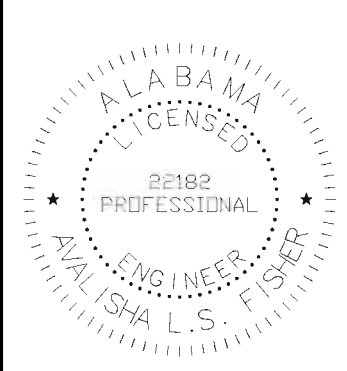
MAYOR MARK BARLOW

DATE: Feb 15, 2024

A	07/20/2023	AMM	ATT	ALF
		90% SUBMITTAL		
0	9/25/2023	AMM	ATT	ALF
		ISSUED FOR BID		
1	2/7/2024	AMM	ALF	ALF
		SECOND 100% SUBMITTAL		

WE UTILIZE SCREENING TECHNIQUES IN OUR DESIGN AND THESE SOME TIMES ARE NOT VISIBLE. OUR DESIGN HAS BEEN COPIED OR PRINTED WITH A LOW QUALITY SETTING. YOU CAN BE SURE THAT YOU HAVE A HIGH QUALITY PRINT OR COPY IF YOU CAN SEE THE DRIVES ENGINEERING, INC. LOGO BEHIND THE TEXT IN THIS BOX.

CITY OF SATSUMA



Driven Engineering, Inc.
 8005 Morris Hill Road, Semmes, AL 36575
 (251) 649-4011 Office
 (251) 643-0971 Fax
 www.driveneengineering.com

CITY OF SATSUMA
 STREET RESURFACING
 COVER SHEET

-Copyright © as Dated by Driven Engineering, Inc. All Rights Reserved		
DATE	SCALE	
09/25/2023	AS SHOWN	
PROJECT NUMBER: 23041		
DRAWING NUMBER	TOTAL SHEETS	REVISION
C01	12	1

PLANS NOT VALID UNLESS THEY BEAR A COLOR SIGNATURE OR AN EMBOSSED SEAL. PLANS ARE NOT ISSUED FOR CONSTRUCTION UNLESS THE REVISION IS A NUMERAL.